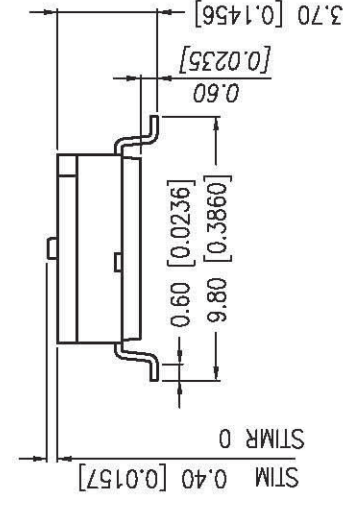
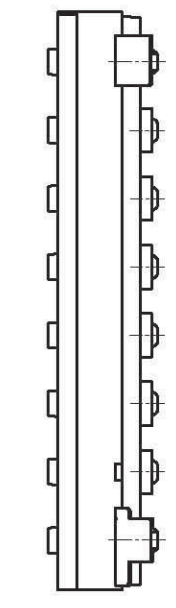
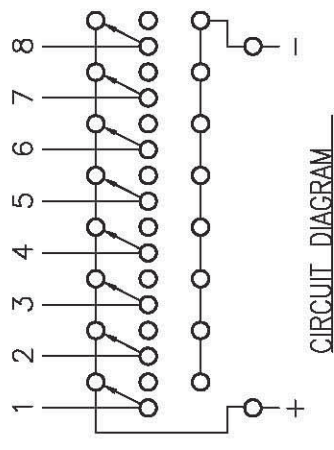
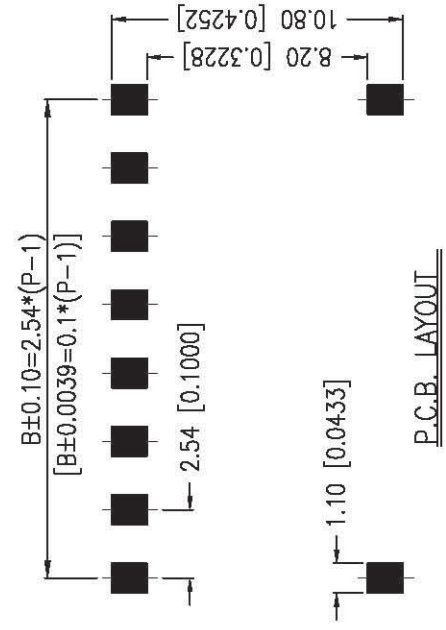
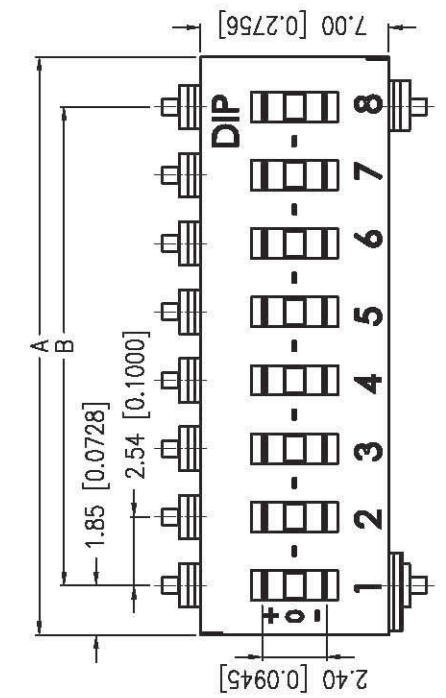


A B C D E F G H



STIM-10-V	10	26.56[1.046]	22.86[.900]
STIMR-10-V			
STIM-09-V	9	24.02[.946]	20.32[.800]
STIMR-09-V			
STIM-08-V	8	21.48[.846]	17.78[.700]
STIMR-08-V			
STIM-04-V	4	11.32[.446]	7.62[.300]
STIMR-04-V			
PROD. NO.	NO. OF POS.	DIM. A	DIM. B

NOTE:
 1. ALL DIMENSIONS ARE IN MILLIMETERS, BRACKETED DIMENSIONS ARE IN INCHES.
 2. GENERAL TOLERANCES MAX. ±0.20mm.

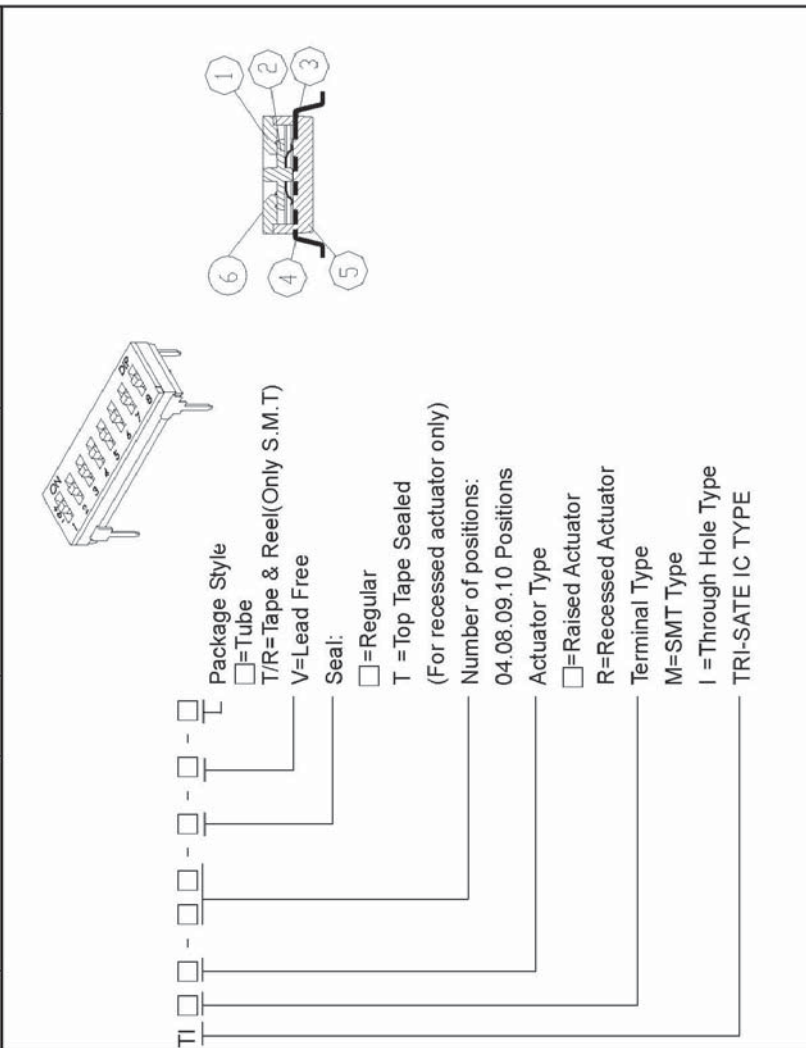
ZONE	REV.	DESCRIPTION	DATE	APPD.
A				
A				
A	DWG. REL			

APPD:	QTY:	REV.:	UNITS:
CARD:	SCALE:	A	mm
DATE: 09.06.76	DESIGN:	蘇文道	黃昌茂
PART NO.:	STIM0 - 00 - V	MATL:	
FINISH:			

喜威達企業股份有限公司	PART NAME:	STI TYPE
SWEETA PRODUCTS CORPORATION		
STIM0 - 00 - V	DWG NO.:	STIM0 - 00 - V

1 2 3 4 5 6 7 8 9 10

ITEM	DESC	Q'TY	MATERIALS	TREATMENT	REMARK
1	COVER	1	HIGH-TEMP THERMOPLASTIC PA-9T UL 94V-0	MOLDED BLACK	-
2	ACTUATOR	1	HIGH-TEMP THERMOPLASTIC LCP UL 94V-0	MOLDED WHITE	-
3	CONTACT	1	COPPER	GOLD PLATED AT CONTACT AREA	-
4	TERMINAL	1	BRASS	GOLD PLATED	-
5	BASE	1	HIGH - TEMP THERMOPLASTIC PA9T UL 94N-0	MOLDED BLACK	-
6	TAPE	1	KAPTON	-	-



TITLE :	APPD. :
TRI-STATE IC TYPE	CHKD. :
PRROD. NO. : TI□□-□□-□□	PR. : 楊佩堯
FILE NO. : E-V-CD16	REV. : A SHEET : 1/1
DWG.REL.	
ECO. NO.	APPD.