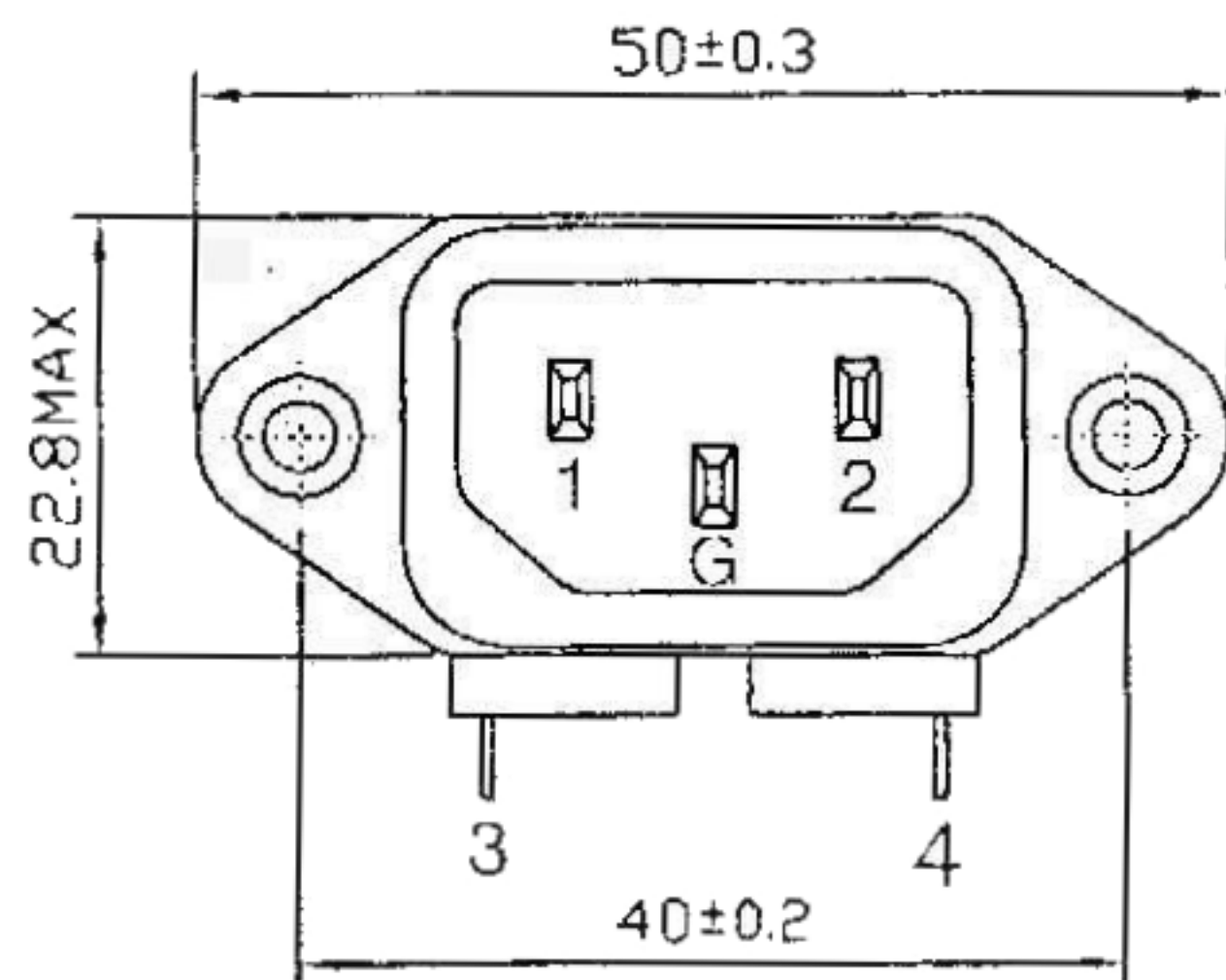


# SPECIFICATION FOR APPROVAL

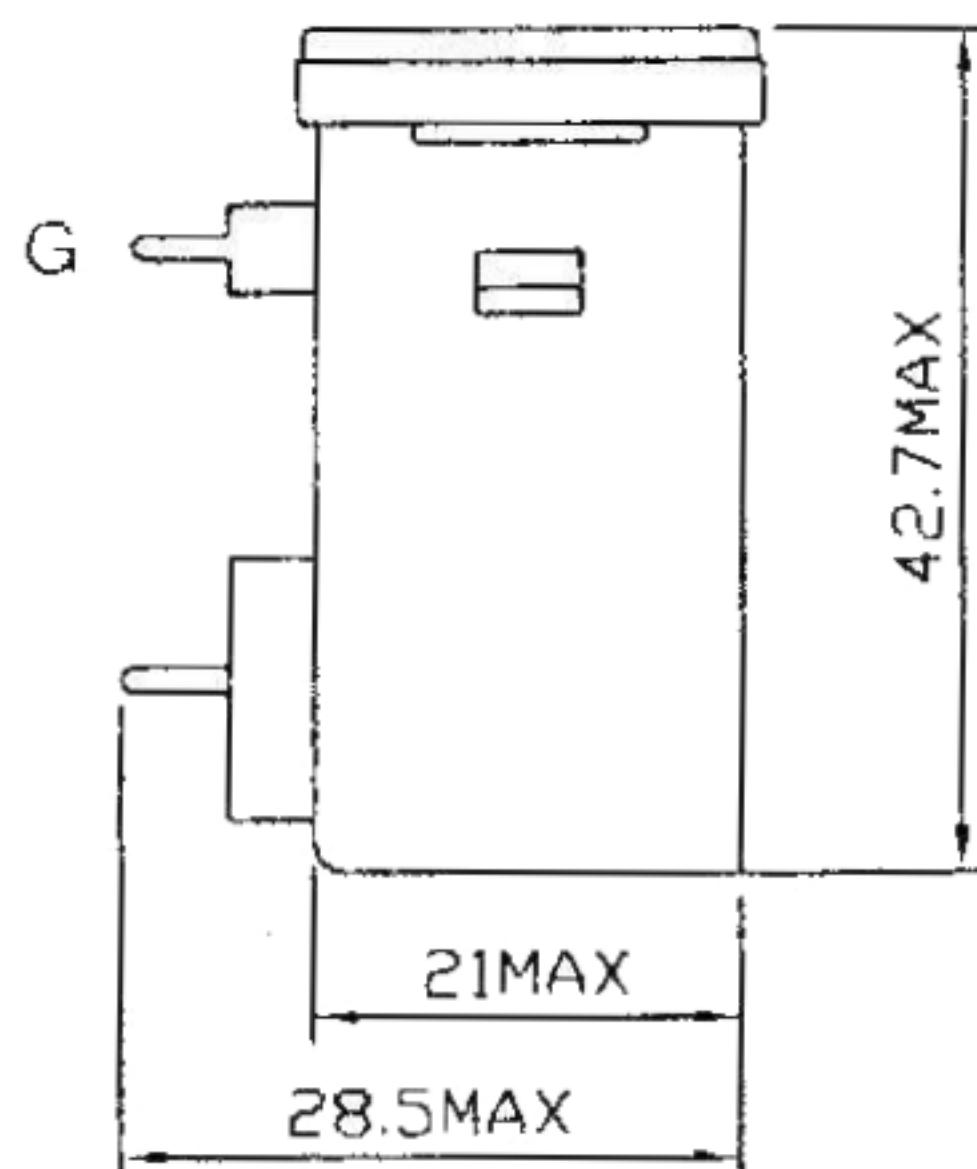
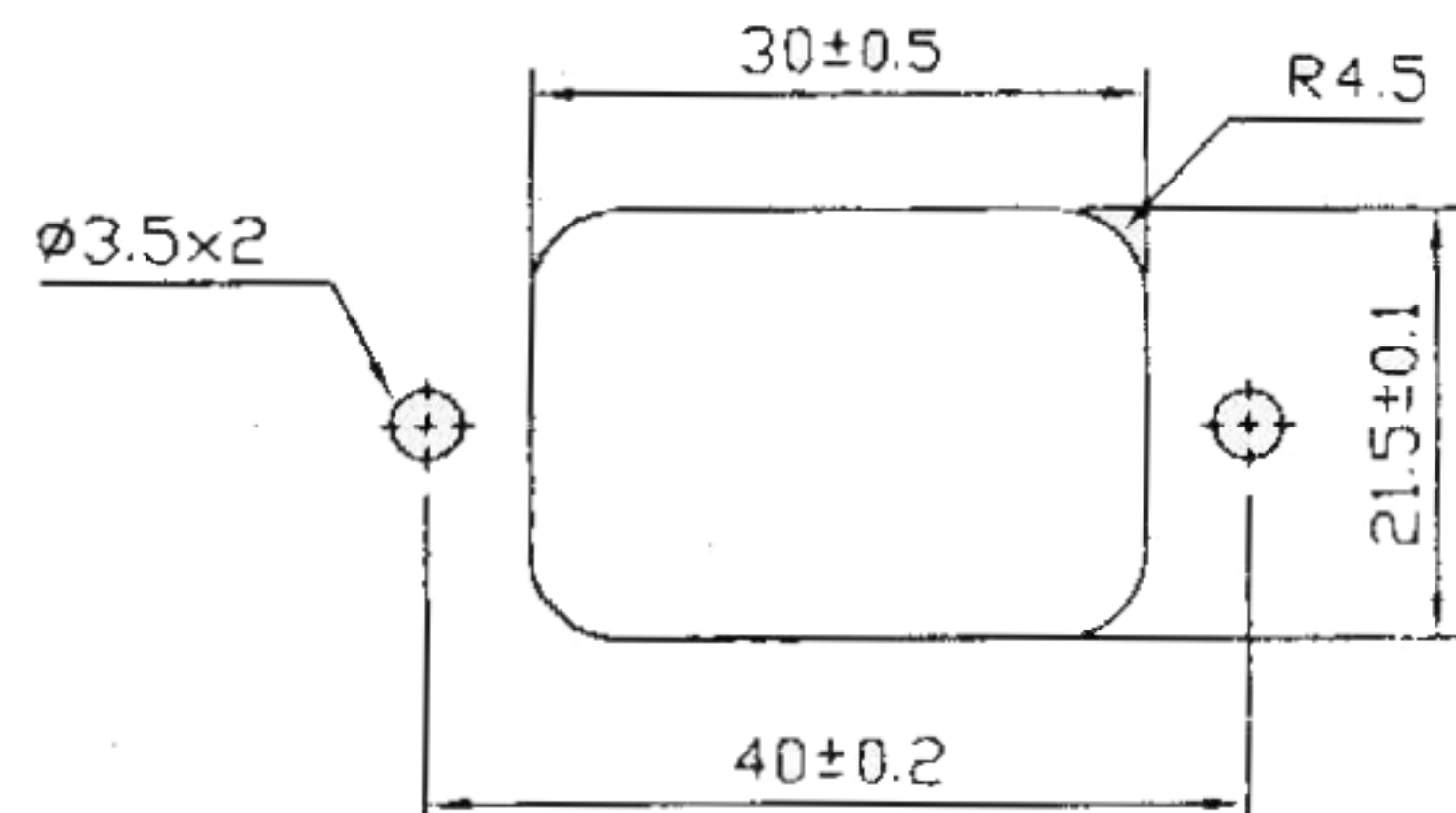
TO:

PART NAME	EMI FILTER	SAMPLE NO	FTA-0043
MODEL	SEYA01P	SAMPLE DATE	SEP.11.2007
USED NO		OUR DRAWING NO	DR-00023b

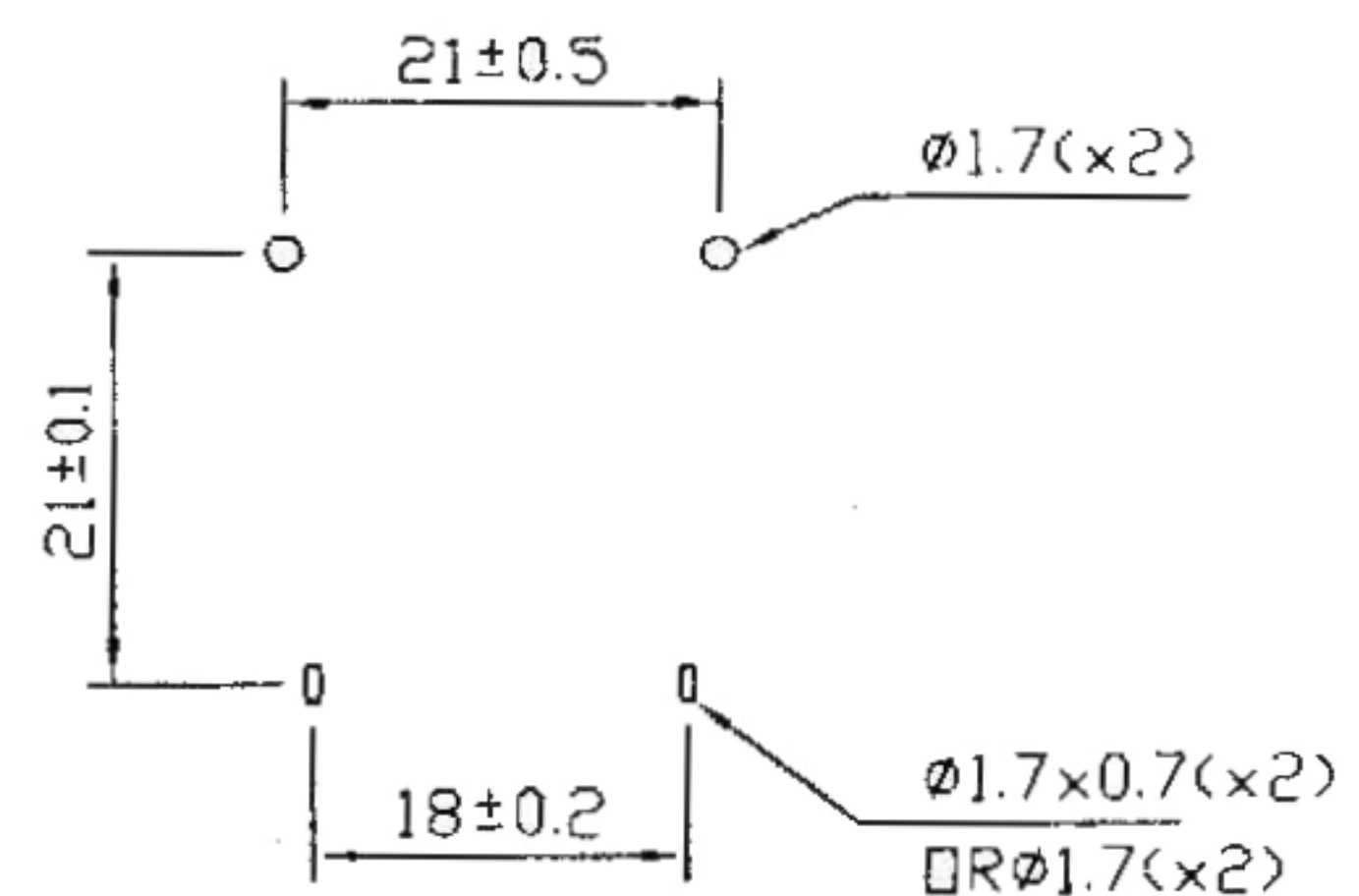
## 1. PHYSICAL DIMENSIONS: (mm)



SUGGESTED CUTOUT  
MOUNTING DIMENSIONS  
OF SOCKET

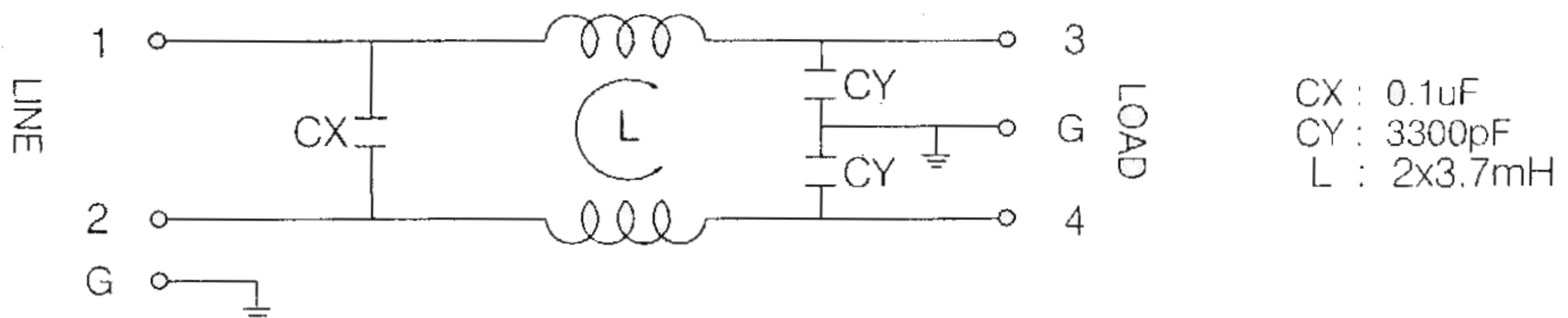


MOUNTING DIMENSIONS  
OF PC BOARD



DIRECTION OF INLET

## 2. SCHEMATIC:



REPORTED BY	CHECKED BY	APPROVED BY	3	
			2	41.7MAX變更42.7MAX
			REV. 1	更新安規號碼

# SPECIFICATION FOR APPROVAL

TO:




PART NAME	EMI FILTER	SAMPLE NO	FTA-0043
MODEL	SEYA01P	SAMPLE DATE	SEP.11.2007
USED NO		OUR DRAWING NO	DR-00023b

## 3.ELECTRICAL CHARACTERISTICS:

3-1.RATED VOLTAGE .....	125/250VAC
3-2.RATED CURRENT .....	1 A
3-3.OPERATING FREQUENCY.....	50/60Hz
3-4.LEAK CURRENT:EACHLINE TO GROUND 250VAC 50Hz .....	0.8mA MAX
3-5.HIPOT RATING:(FOR ONE MINUTE) LINE TO LINE .....	1450VDC
LINE TO GROUND .....	1800VAC
3-6.INSULATION RESISTANCE .....	250VDC/100MOHM MIN
3-7.DIRECT CURRENT RESISTANCE .....	0.5 OHM MAX
3-8.OPERATING TEMPERATURE .....	-25 TO +85°C

## 4.SAFETY COMPLIANCE:

UL FILE NO:E134751  
 CSA FILE NO:LR95210  
 VDE FILE NO:40007880  
 SEMKO FILE NO :9444068  
 FIMKO FILE NO:184116-01---03  
 NEMKO FILE NO:P95102844  
 DEMKO FILE NO:303953

REPORTEDD BY	CHECKED BY	APPROVED BY	3	
			2	
			REV. 1	